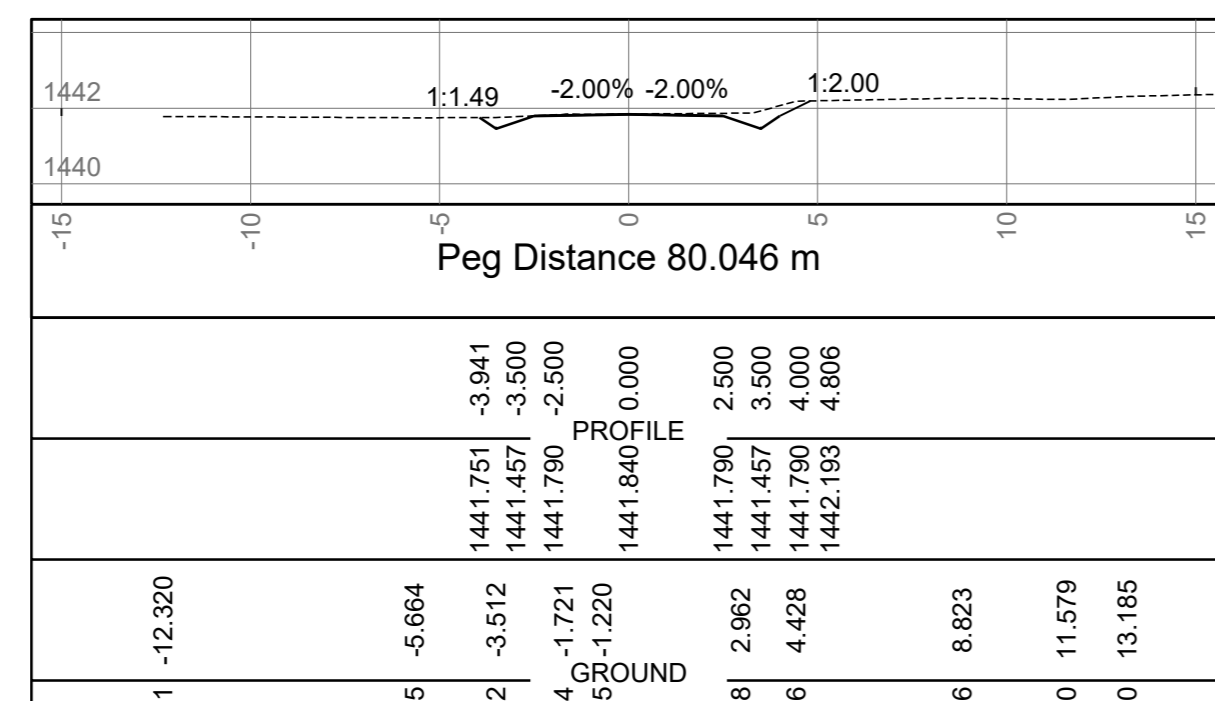
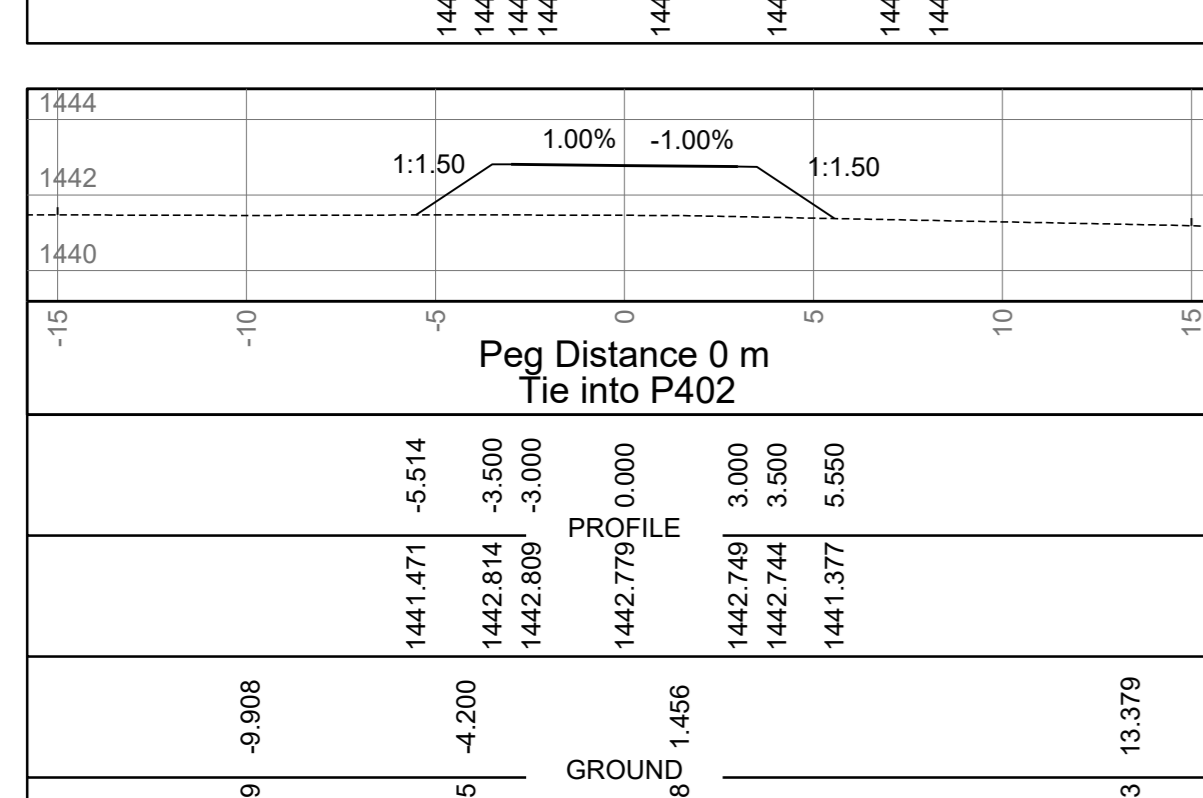
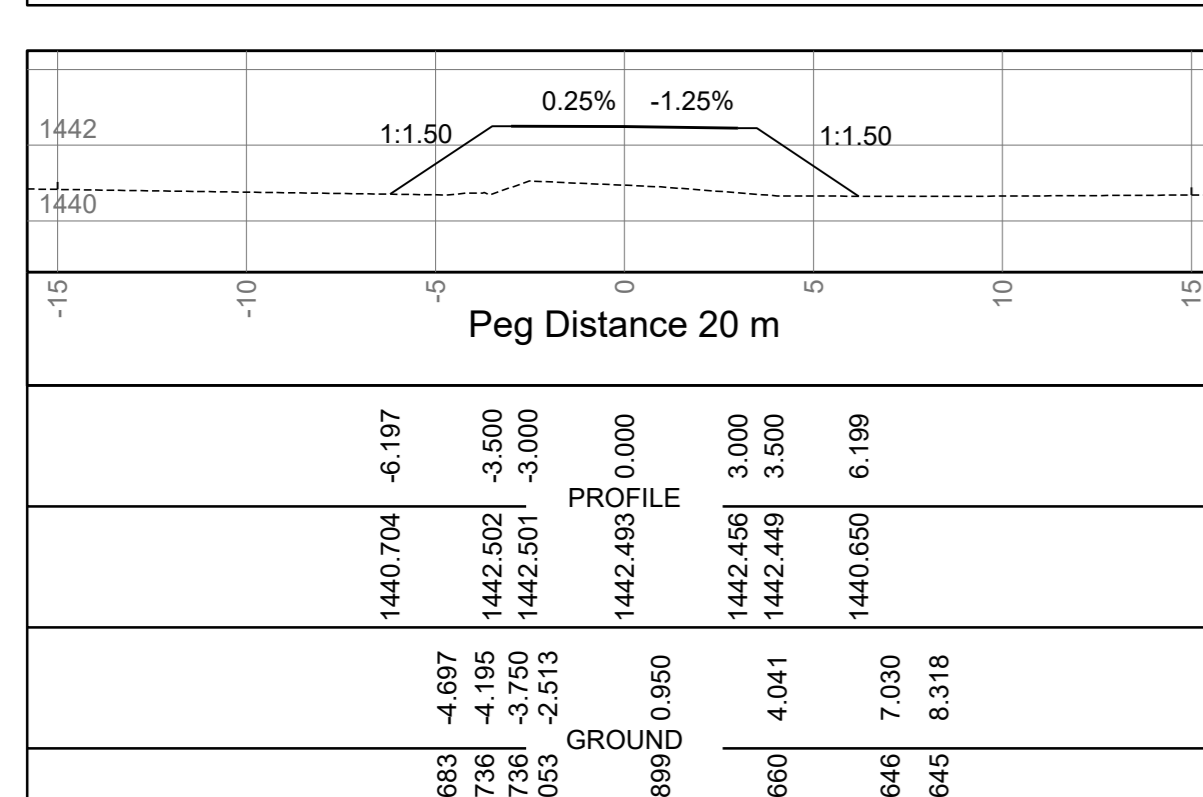
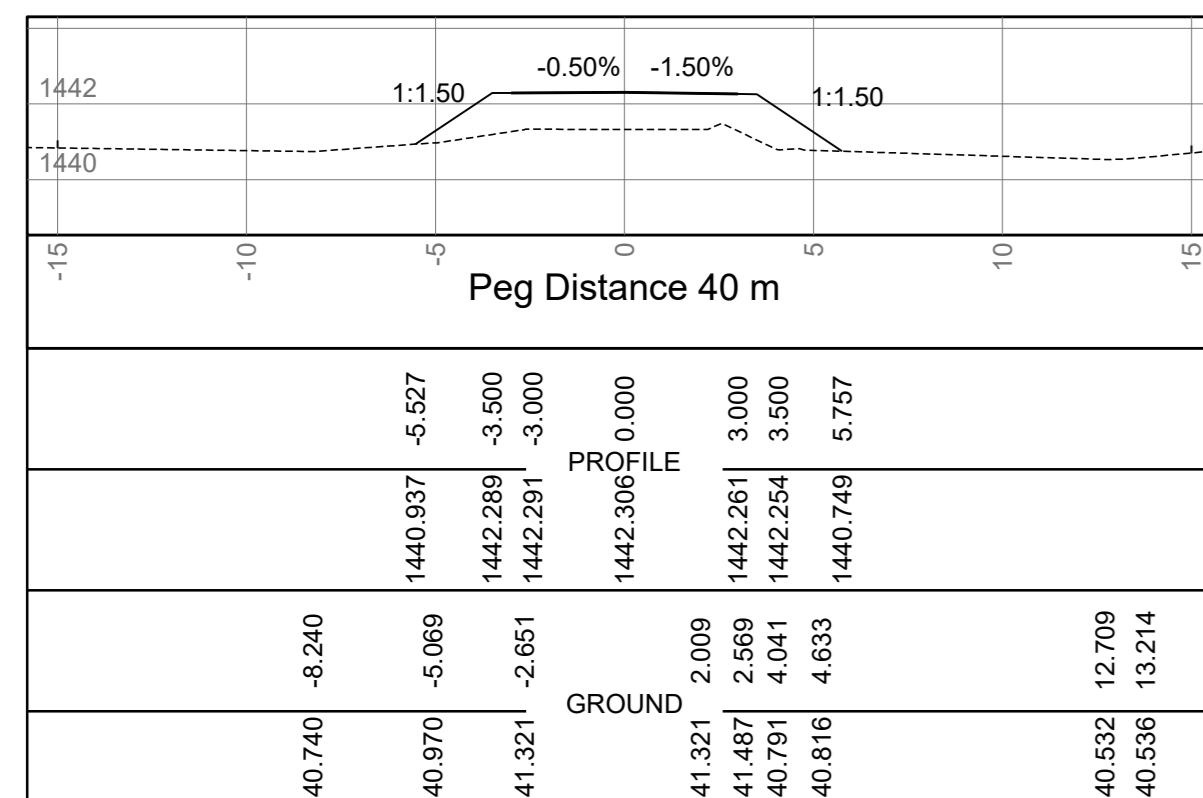
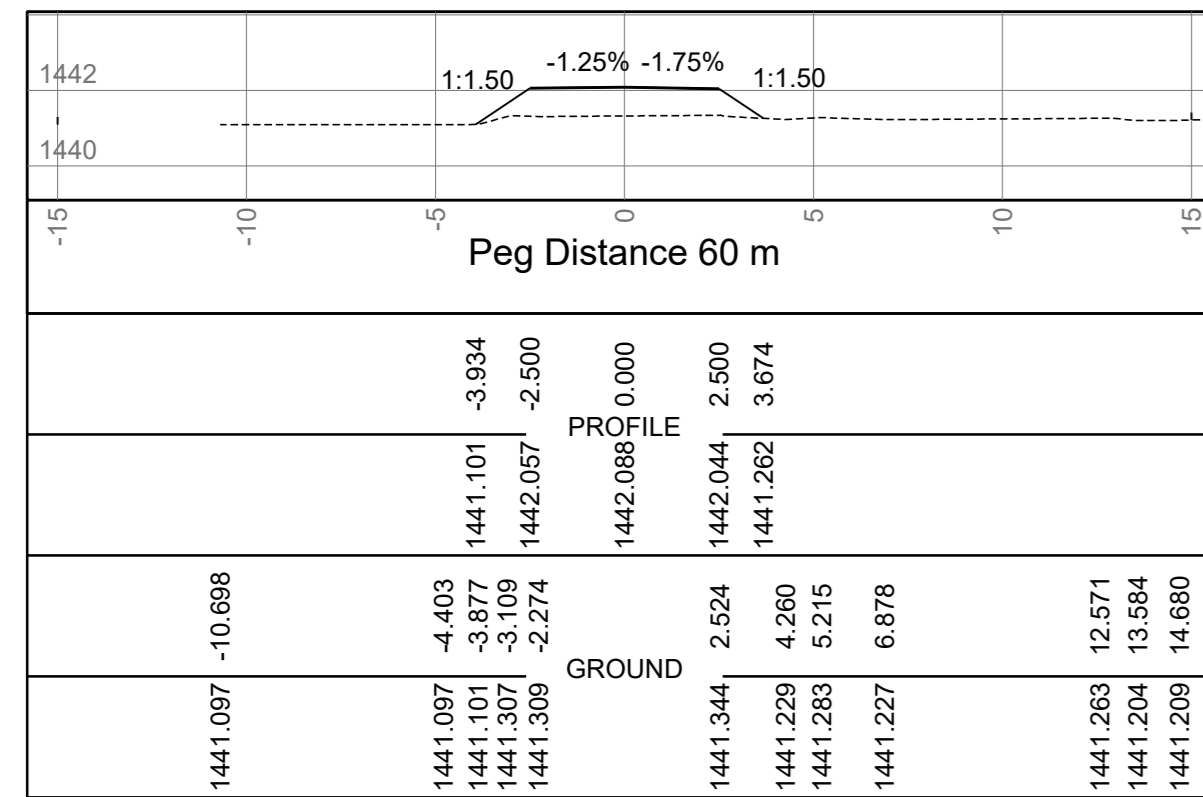
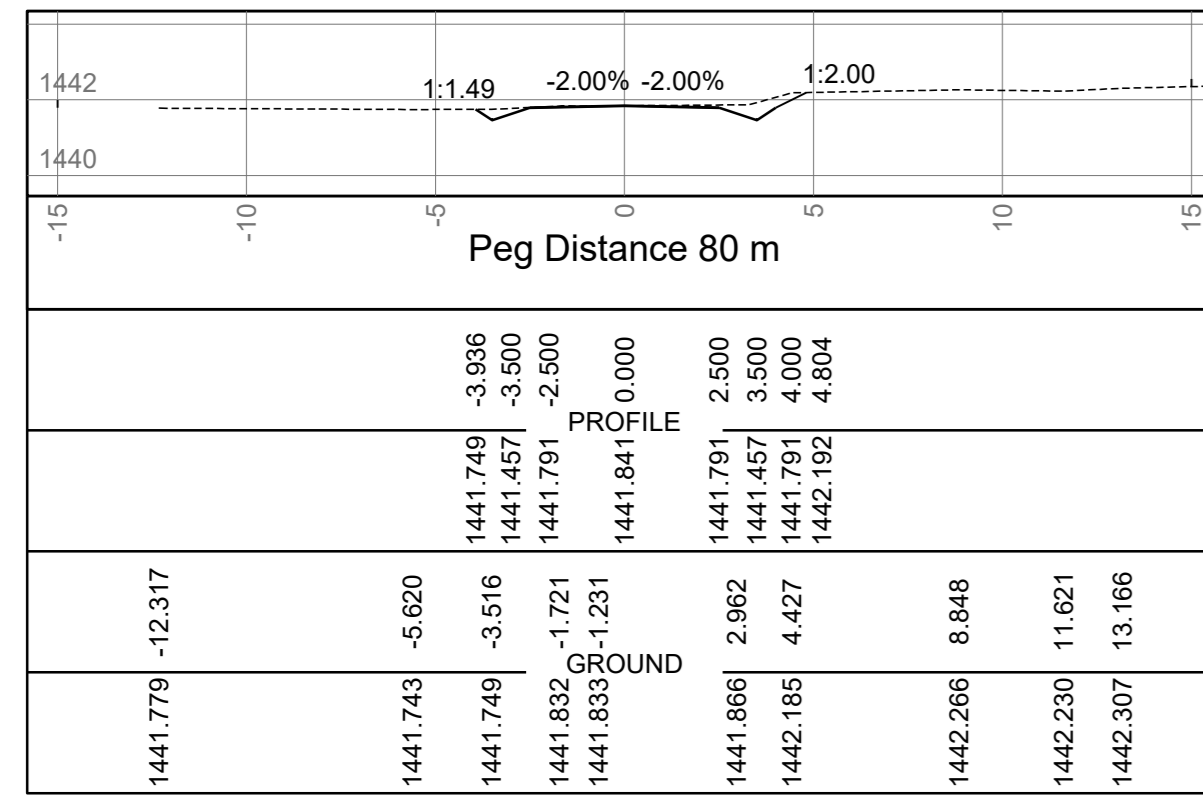
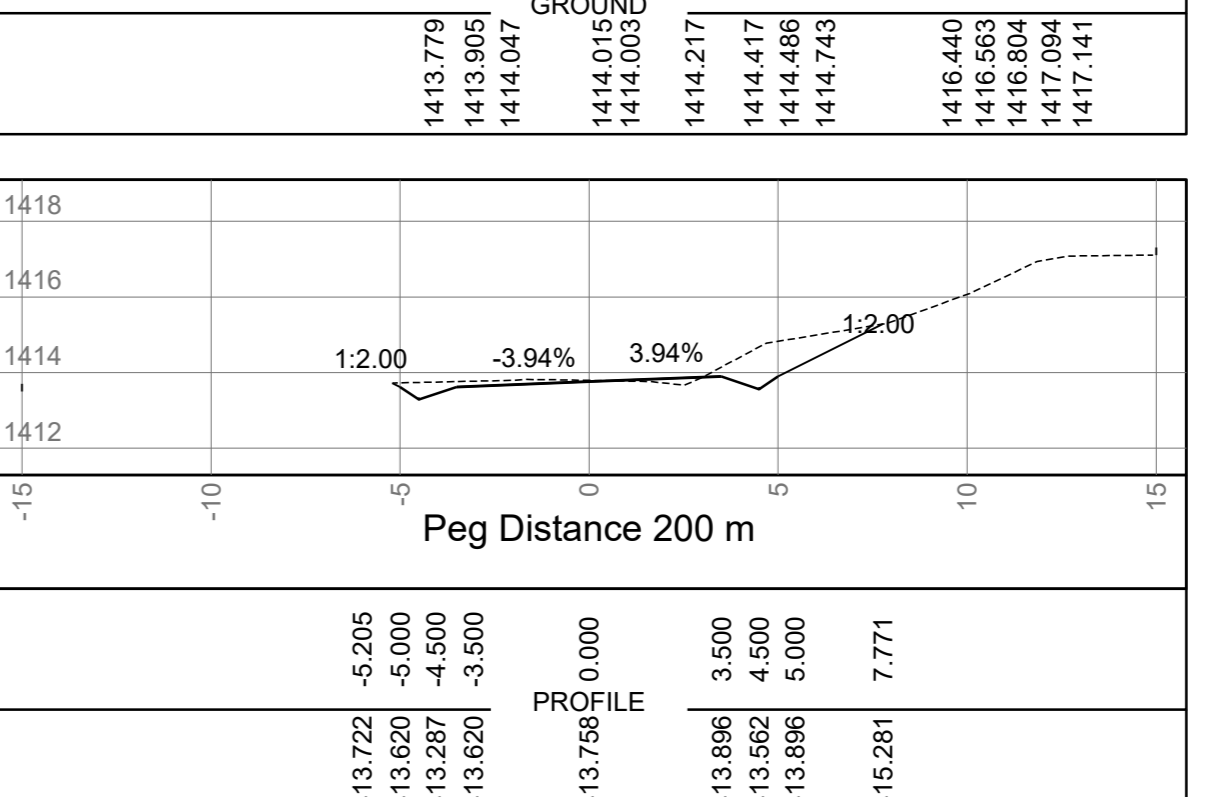
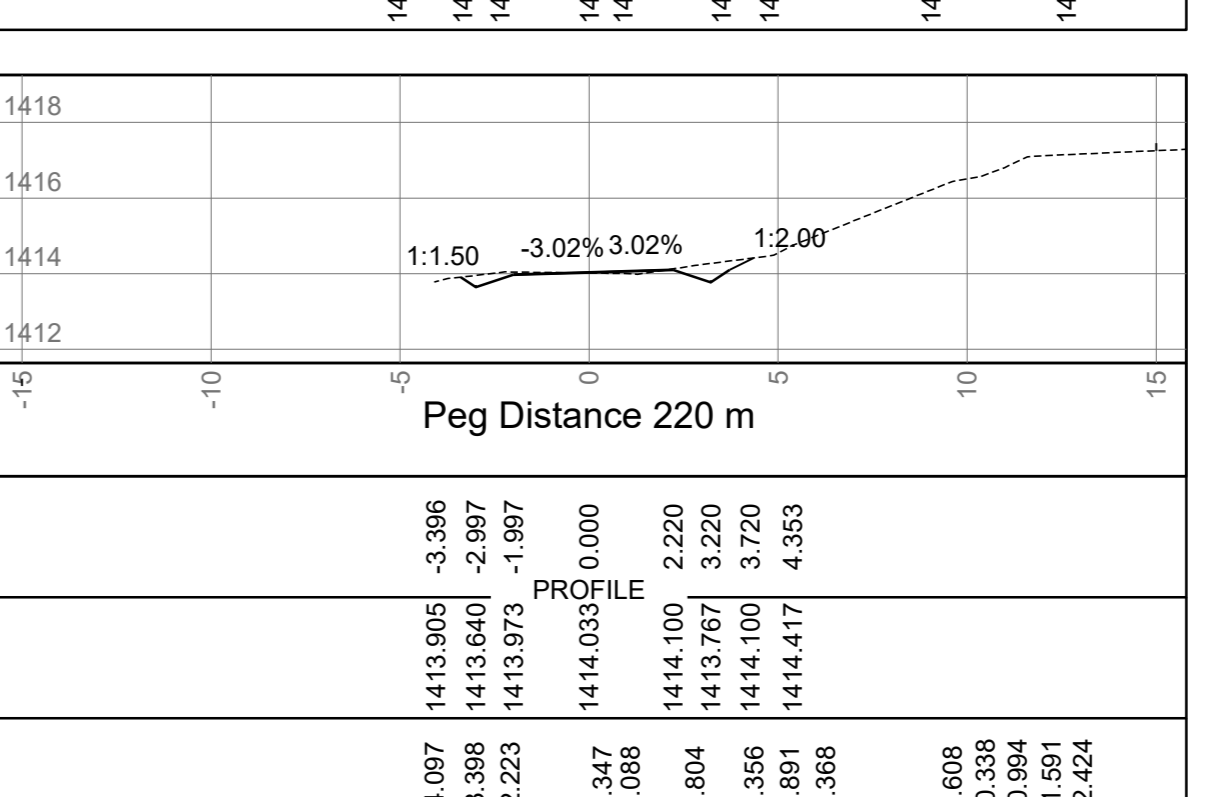
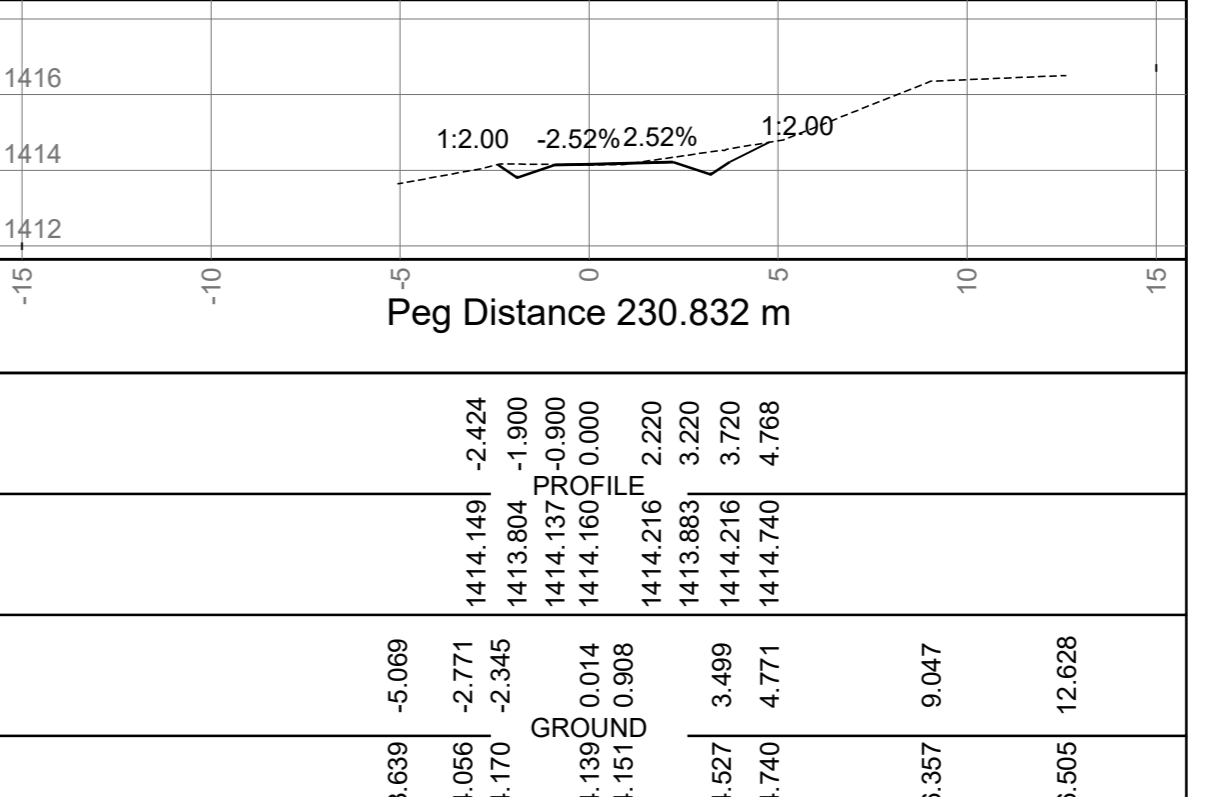
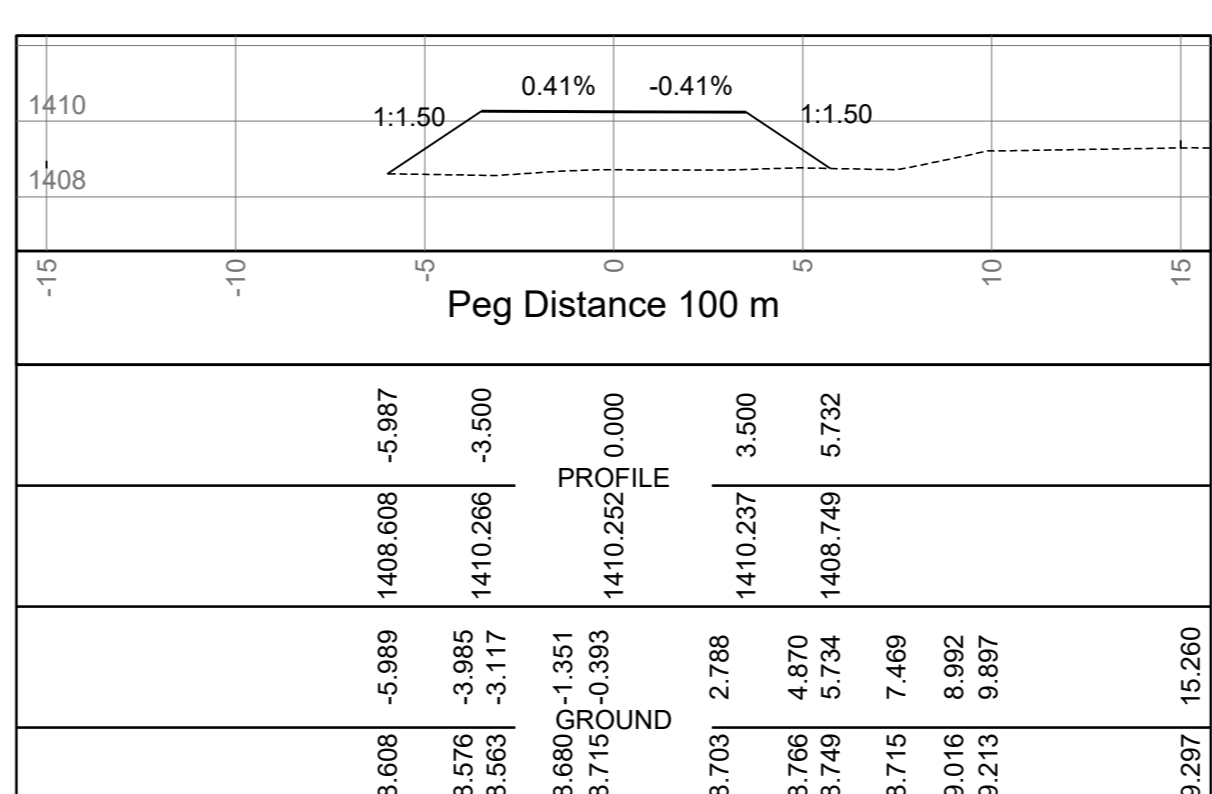
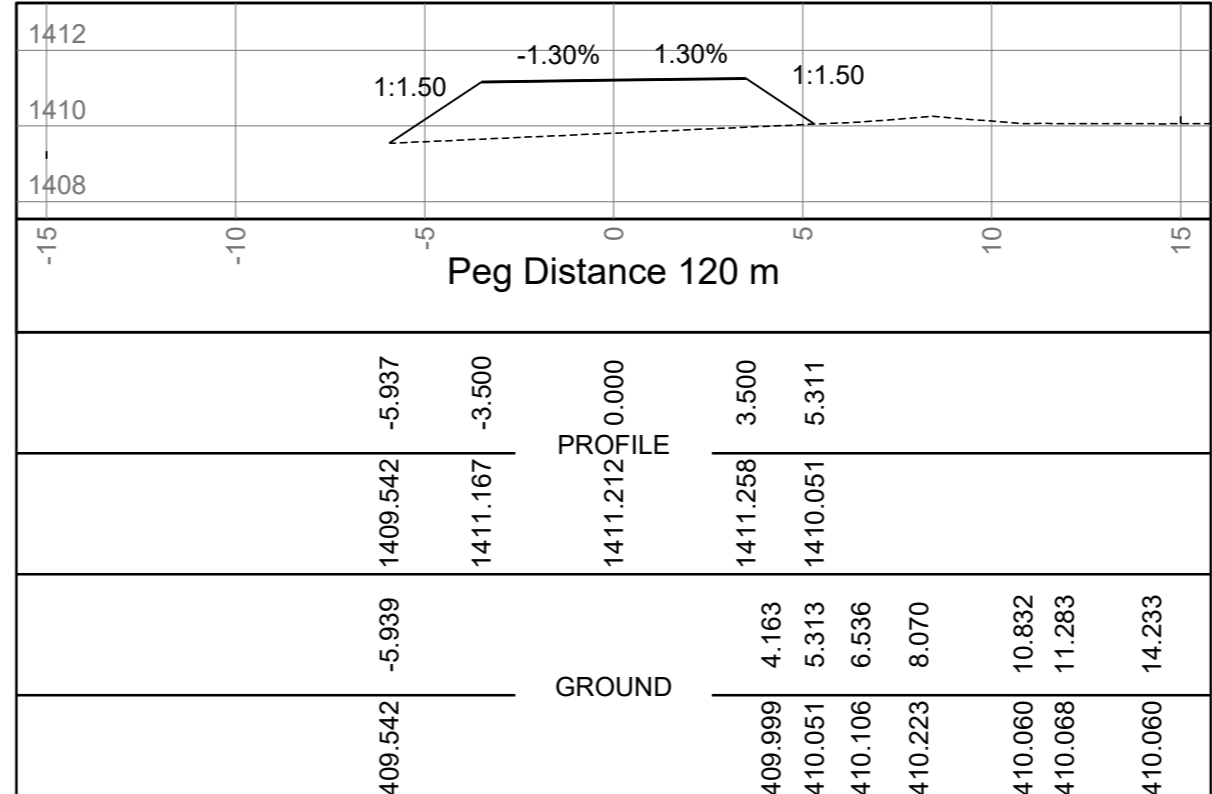
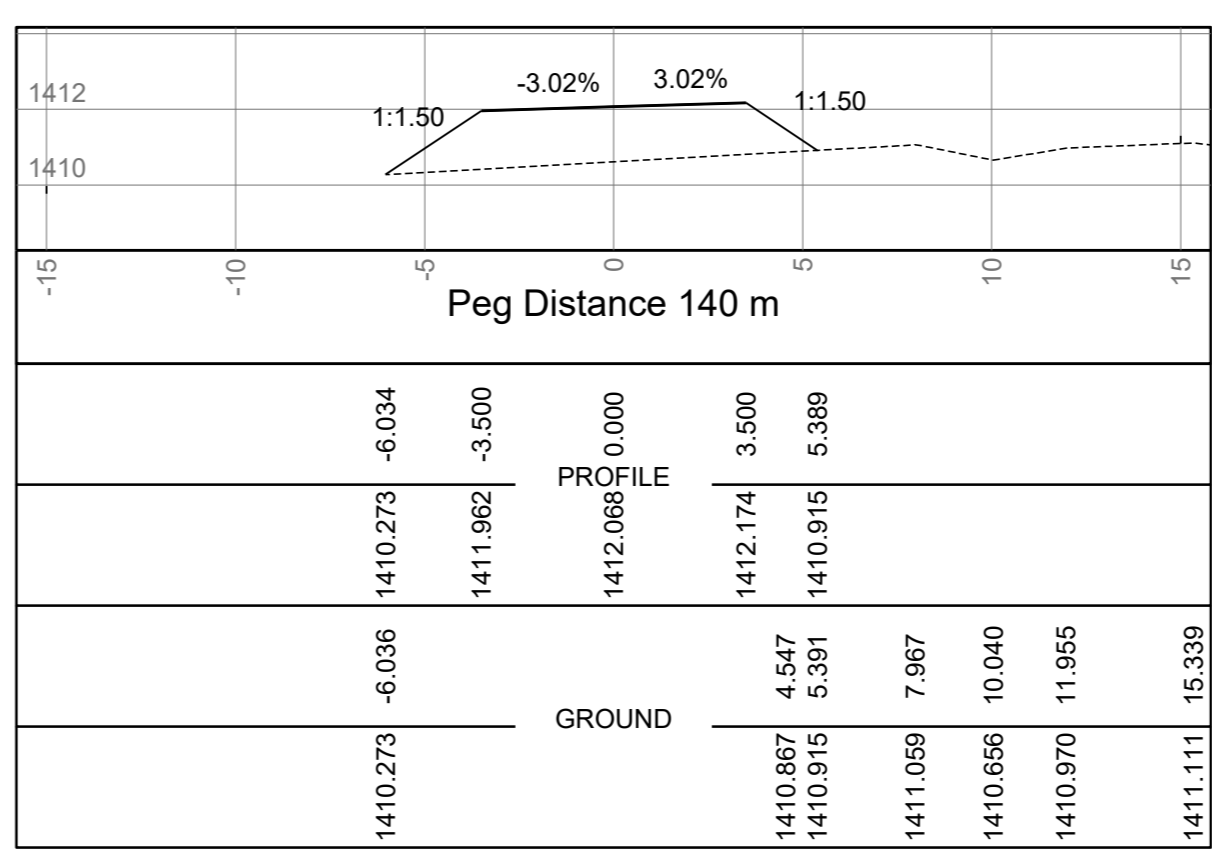
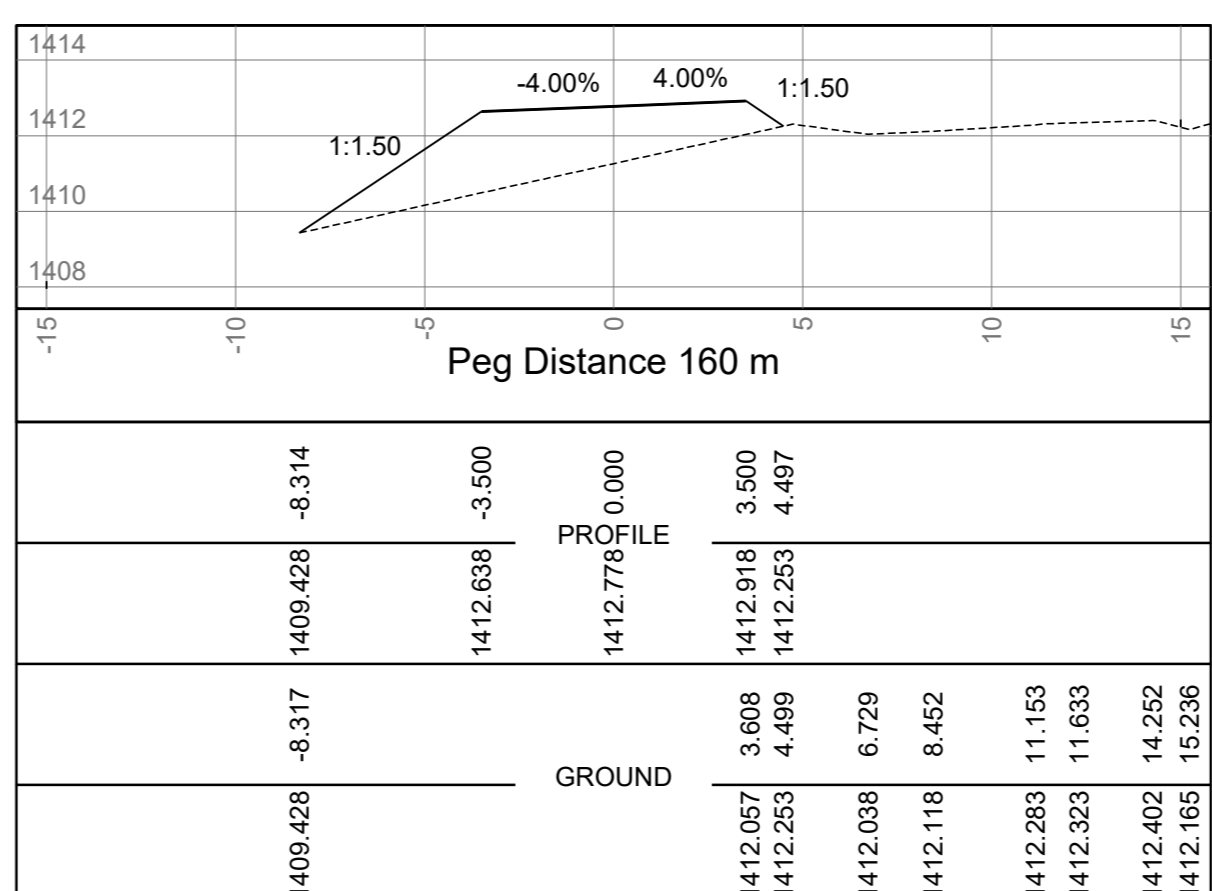
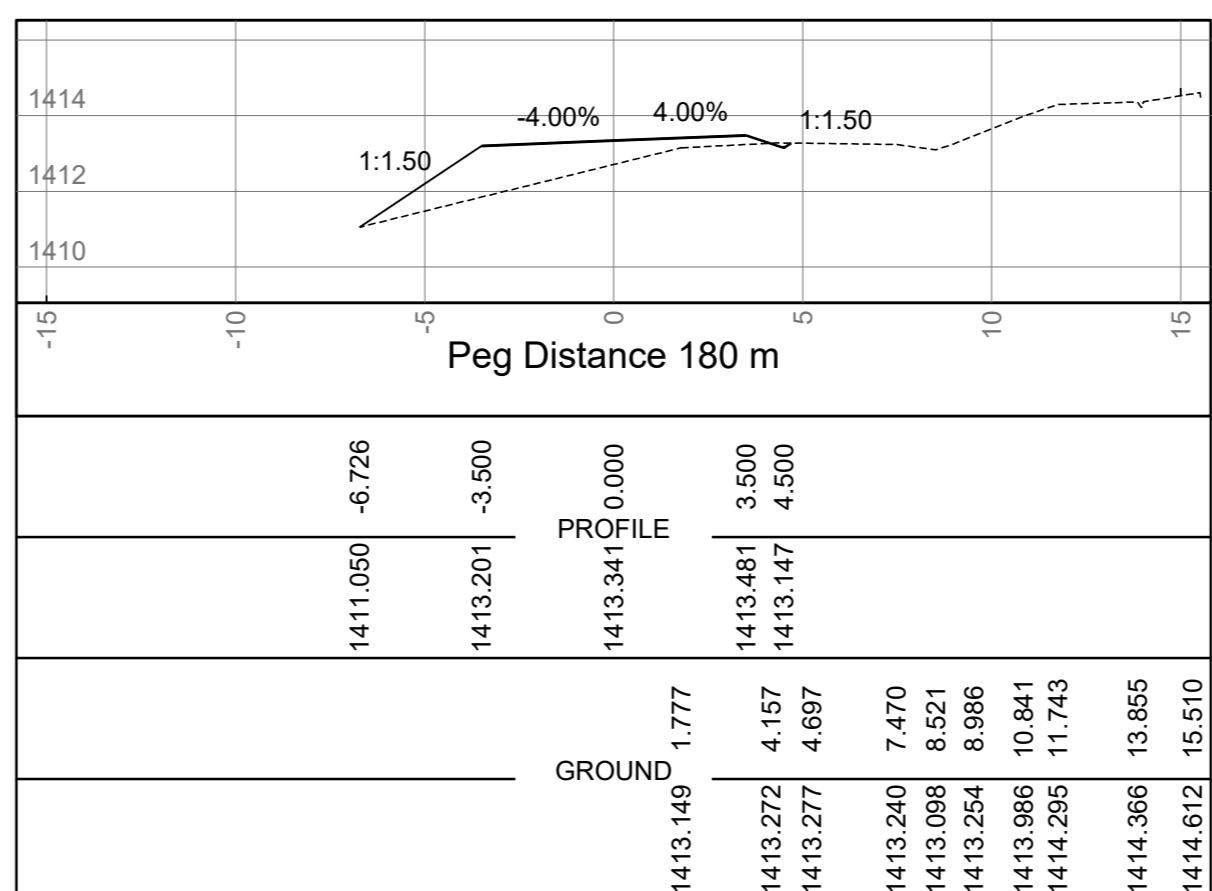
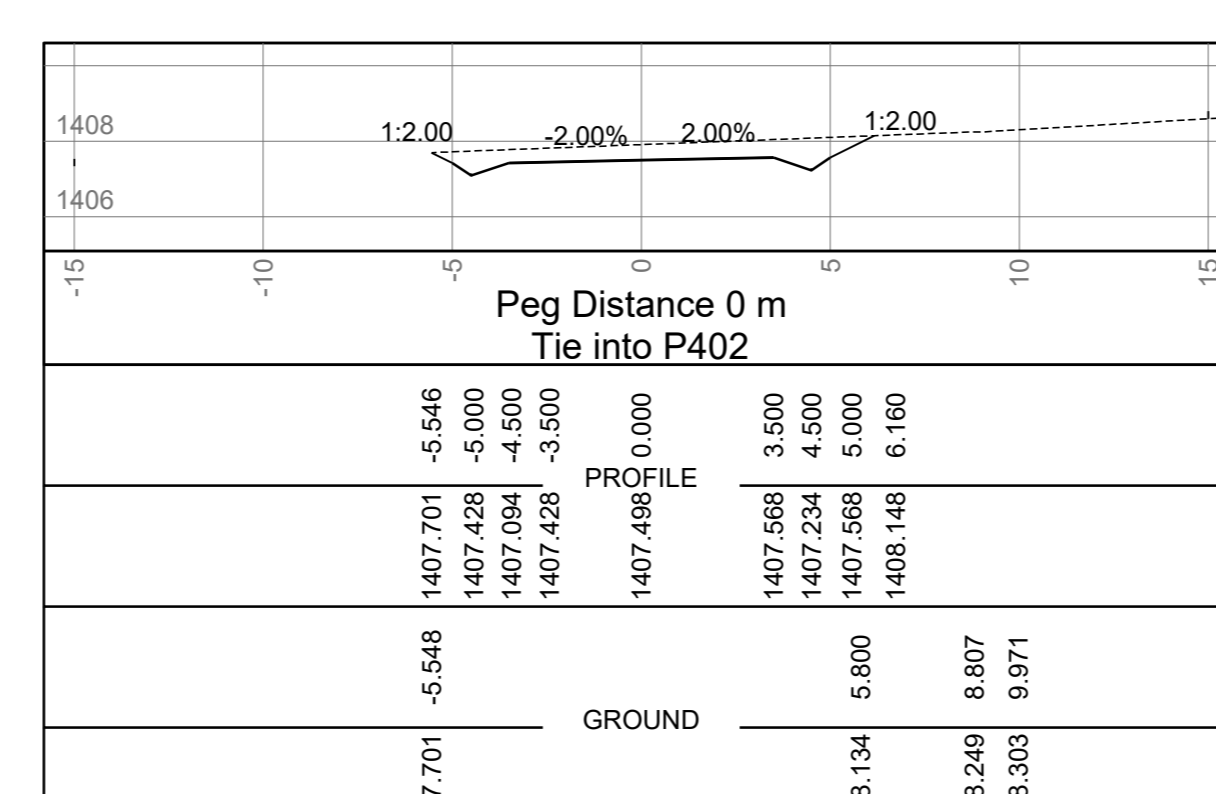
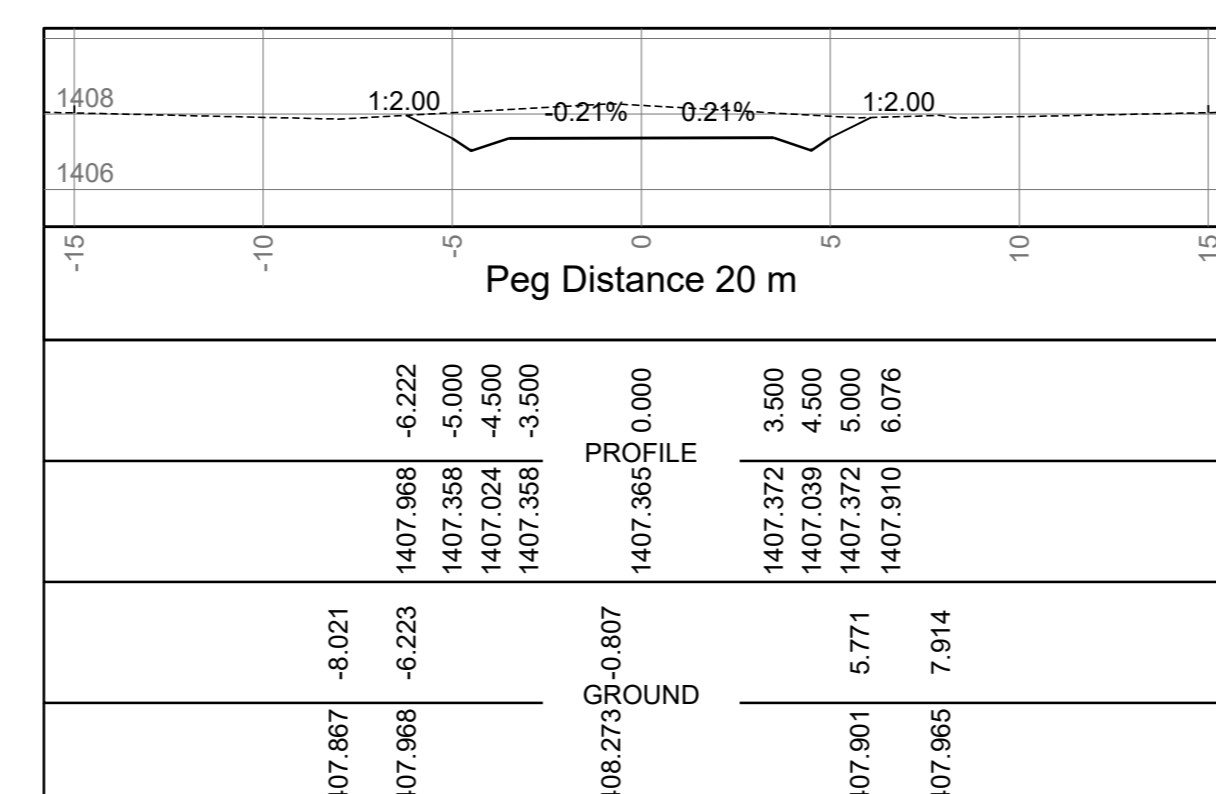
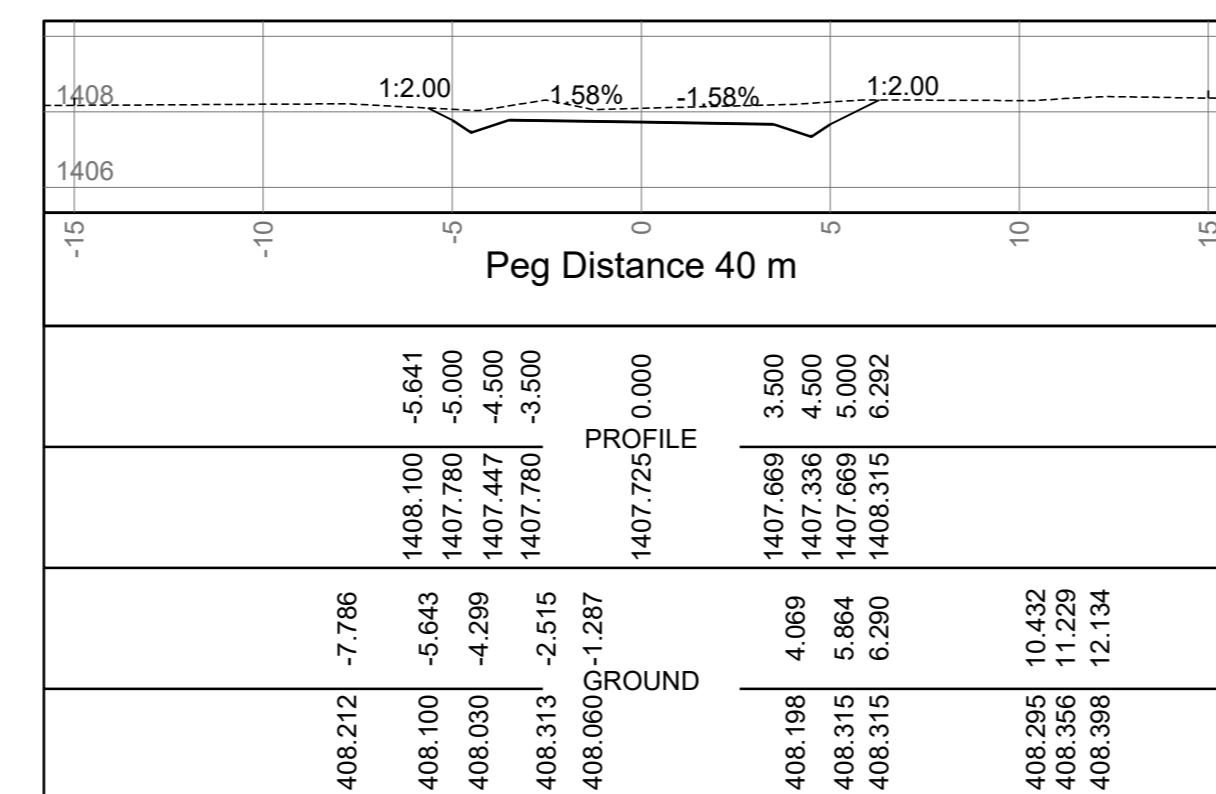
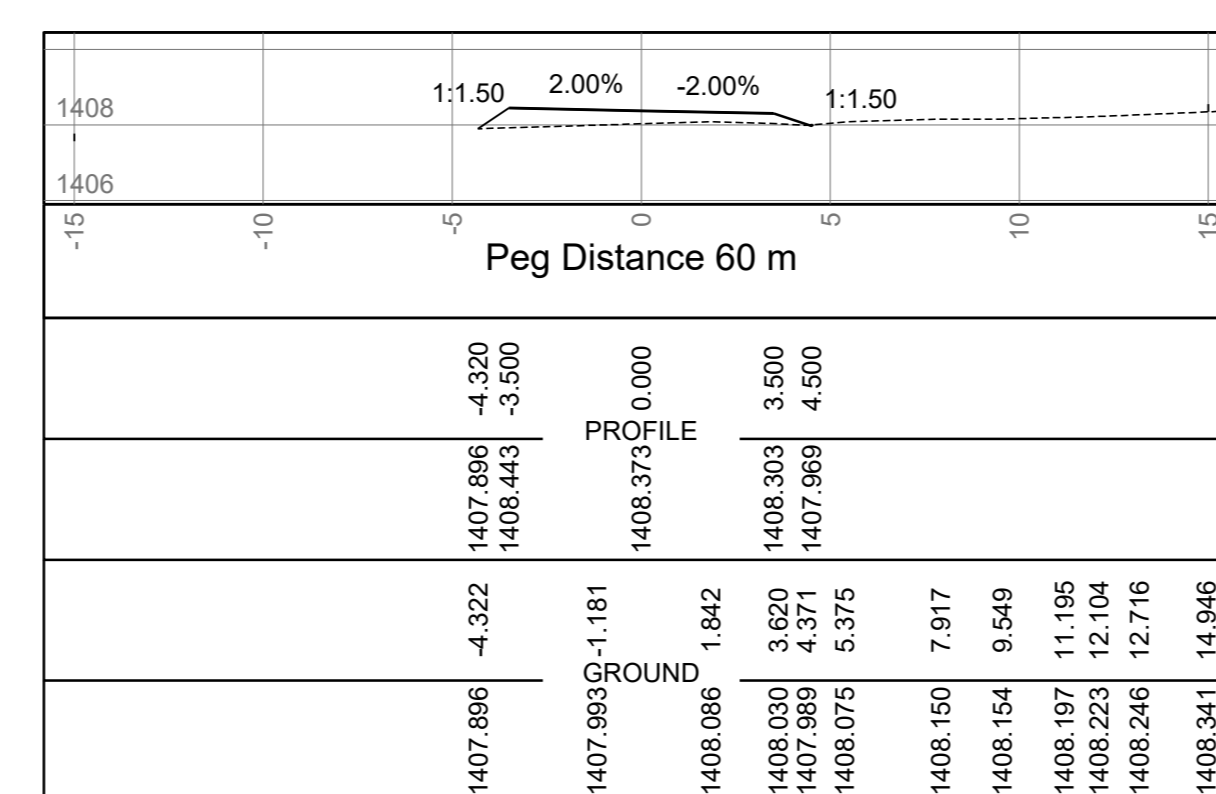
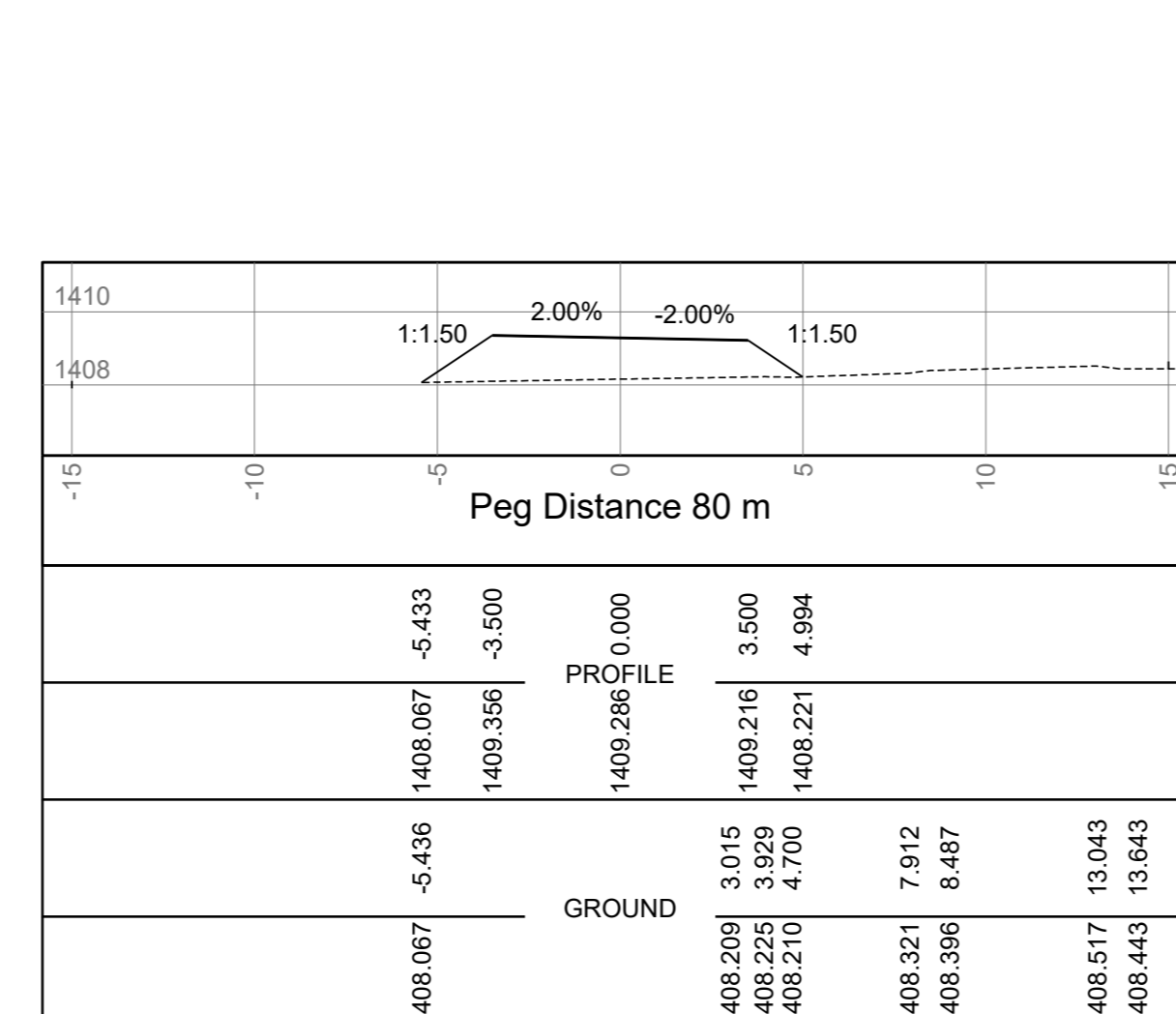


**L1874
TYPE B1 - RIGHT ACCESS NO. 1
KM 1+815**



**L1935
TYPE B1 - RIGHT ACCESS NO. 2
KM 3+183**



NOTE:
1. START OF ACCESS ROAD TO TIE IN TO MAIN ROAD 402 ROAD LEVELS.
2. FOR ACCESS ROAD SIGNAGE AND ROADMARKING REFER TO DWGS C41989 - C41996

FOR FINAL APPROVAL

SYMBOL	DATE	DESCRIPTION	CHECKED	SIGNED
D	OCT 2019	FOR FINAL APPROVAL	KG	
C	AUG 2018	FOR APPROVAL	KG	
B	AUG 2016	FOR APPROVAL	MM	

AS BUILT	
SUPERVISING ENGINEER	DATE
SUPERVISING AUTHORITY	

CONTINUED FROM:	DESIGNED BY: M SINGH
CONTINUED ON: C45221	CHECKED BY: K GOVENDER
LONG SECTION NO: C45223	DRAWN BY: M MARAIS
DESIGN PLAN NO: C41964 to C41970	CHECKED BY: S RAMATHER
NAIDU CONSULTING - CONSULTING ENGINEER K GOVENDER	SIGN DATE

Designed by-

Naidu Consulting no. - D267/2555/D

Department: Transport
Province of KwaZulu-Natal

TRANSPORTATION ENGINEERING: CHIEF ENGINEER
HEAD: TRANSPORT

UPGRADING OF MAIN ROAD 402 (HOLY FAMILY CONVENT - KWAMGWAGWA)

PORTION

PHASE 2 from km 0+000 to km 7+520

CROSS SECTIONAL DRAWINGS FOR ACCESS ROADS L1874 AND L1935

STAKED KM DISTANCE	SHEET 1 OF 3
AS SHOWN	PLAN No.
SCALE HOR 1:200 VERT 1:200	C45220